



12th ANNUAL TAG, TICKET & LABEL PRINTING CONFERENCE

March 25-27, 2002

1st RFID CONFERENCE

March 27-28, 2002

Sheraton Safari Hotel
Orlando, Florida

sponsored by

Information Management Institute, Inc.



photos courtesy of Orlando/Orange County Convention & Visitors Bureau, Inc.

12th Annual Tag, Ticket & Label Printing Conference

CONFERENCE FOCUS

The role of digital electronic tag, ticket and label printing is experiencing major opportunities and challenges as global marketplace expansion is driving requirements for new and improved supply chain tracking and management alternatives. Printed bar codes, the stalwart of automated data collection for the past twenty five years, are facing integration with and/or competition from technologies such as RFID, Direct Product/Part Marking, Biometrics, Smart Cards, etc.

This conference is designed to explore the current state-of-the-art and future trends for the utilization of digital tag, ticket and label printing technologies in the rapidly changing worlds of supply chain management, eCommerce, B2B marketplaces, etc. Leading technologists, experts and users will address the adoption of new technology developments and innovations that are shaping the future of tag, ticket and label printing. This program provides a unique opportunity to obtain insights and knowledge essential to the future operations of tag, ticket and label industry vendors and end users.

CONFERENCE CHAIRMAN

Charles E. Mara, Consultant

CONFERENCE SPEAKERS

Dr. Maureen L. Brock, Hewlett Packard SPS
Dr. David Chaum
David A. Estabrooks, Digital Laser
Chris Faust, Chromas Technologies
Michael Flippin, I. T. Strategies
Dr. Alan Hudd, Xennia Technology
David Krebs, Venture Development Corp
Sean Marske, VIPColor
Paul McCarthy, Kyocera Industrial Ceramics
Jiro Oi, AFIT-USA
Janice Reese, Vice President, Think 121

1st RFID Conference

CONFERENCE FOCUS

Radio Frequency Identification's (RFID) tremendous potential to penetrate supply chain management, logistics, asset management, security, etc. has been recognized for some time and RFID is projected to increase its market size dramatically over the next few years. Yet, many questions remain regarding its economics, capabilities, integration with other Auto ID technologies, etc. IMI's **1st RFID Conference** is designed to provide a comprehensive assessment of current RFID technology capabilities, applications requirements and implementation issues controlling RFID's adoption into a wide variety of applications. Leading technologists, experts and users will address the adoption of RFID technology developments and innovations that are shaping the future of the automatic identification industry. This program provides a unique opportunity to obtain insights and knowledge essential to the integration of RFID technology into the tag, ticket and label industry.

CONFERENCE CHAIRMAN

Charles E. Mara, Consultant

CONFERENCE SPEAKERS

L. Allen Bennett, ADC Technologies
Xavier Bon, ASK
Bill English, Bielomatik
Lars Fredin, Metget
Dr. Alan Hudd, Xennia Technology
John Kingsmill, Identec Solutions
David Krebs, Venture Development Corp
To Be Announced, Feig Electronic

BENEFITS OF IMI CONFERENCE ATTENDANCE

- Learn the current state-of-the-art and latest technological developments as well as potential impact in the automatic identification industry
- Establish personal contacts with leading technologists, users and innovators.
- Participate in interactive sessions and informal discussions of technology developments, applications development, market size and structure
- Have a complimentary Table-top Display
- Explore the key issues important to your business with your counterparts from all sectors of the industry
- Give a 5-minute presentation of your products, services and capabilities during popular Suppliers' Forum Session
- Hear industry experts' projections
- Receive information on key issues influencing your company's decisions and future directions

12th Annual Tag, Ticket & Label Printing Conference

Monday, March 25, 2002

12:00 Noon - 5:00 p.m.

Registration

For Complete Outlines,
Visit IMI Web Site
<http://imi.maine.com>

2:00 p.m.

Opening Session – Technology and Market Evolution

WELCOME, INTRODUCTIONS & OPENING REMARKS

Alvin G. Keene, President, Information Management Institute, Inc., Kingfield, Maine

TECHNOLOGY AND APPLICATION DEVELOPMENTS FOR ON-DEMAND TAG, TICKET & LABEL PRINTING

CONFERENCE CHAIRMAN: Charles E. Mara, Consultant, Concord, Massachusetts

DIGITAL INDUSTRIAL PRINTING MARKETS

Michael Flippin, Consultant, I. T. Strategies, Hanover, Massachusetts

VOTING MACHINE RECEIPTS: A NEW MARKET OPPORTUNITY

Dr. David Chaum, Founder, DigiCash

5:30 p.m.

Reception

Tuesday, March 26, 2002

7:30 a.m.

Continental Breakfast

8:30 a.m.

Session 2 – Digital Printing Technology Developments

THERMAL PRINTING MEETING THE CHALLENGES OF A CHANGING MARKET

Paul McCarthy, Manager, Market Development, ThinFilm Device Group, Kyocera Industrial Ceramics Corporation, New York, New York

TAKING THERMAL INK JET INTO INDUSTRIAL APPLICATIONS

Dr. Maureen L. Brock, OEM Alliance Manager, Hewlett Packard Specialty Printing Systems, San Diego, California

ON DEMAND COLOR LABEL AND TAG PRINTING

Sean Marske, CEO, VIPColor, Newark, California

HYBRID PRESSES FOR TAG, TICKET & LABEL PRINTING MARKET

Chris Faust, Director of Digital Development, Chromas Technologies, Loveland, Ohio

12:00 Noon

Lunch

1:30 p.m.

Session 3 – Digital Printing Technology Developments

THERMAL REWRITABLE TECHNOLOGY UPDATE AND INNOVATIONS

Jiro Oi, Director, AFIT-USA, Nashville, Tennessee

LED/LASER IMAGING TECHNOLOGY DEVELOPMENTS FOR NARROW WEB LABEL AND TRANSACTION PRINTER

David A. Estabrooks, President, Digital Laser, Newburyport, Massachusetts

SUPPLIERS' FORUM

5 - 10 Minute Presentations Related To Tag, Ticket & Label Printing & Alternative Products Or Services – An Opportunity For Conference Participants To Explain Their Developments & Contributions To Digital Tag, Ticket & Label Printing & Competitive Technologies

5:30 p.m.

Reception

Wednesday, March 27, 2002

7:30 a.m.

Continental Breakfast

8:30 a.m.

Session 4 – Integrated Digital Tag, Ticket & Label Printing

OPTIONS FOR TAG, TICKET & LABEL INK JET PRINTING

Dr. Alan Hudd, Managing Director, Xenxia Technology, Royston, Hertfordshire, England

“pdf MANUFACTURING” ALLOWS VARIABLE DATA OUTPUT FLEXIBILITY

Janice Reese, Vice President, Think 121, Harwick, Pennsylvania

BAR CODE PRINTING MARKETS - THERMAL IS DEAD, LONG LIVE THERMAL

David Krebs, Analyst, Venture Development Corporation, Natick, Massachusetts

12:00 Noon

Lunch & Adjournment



Photo courtesy of Cumberland County Convention & Visitors Bureau, Inc.

PRODUCT DEMONSTRATIONS – FREE DISPLAYS

Product demonstrations/displays by both **12th Annual Tag, Ticket & Label Printing Conference** and **1st RFID Conference** speakers and registrants are encouraged. IMI will cooperate with all interested parties to provide appropriate space so that products can be displayed and demonstrated during the conference breaks. There is no charge in addition to the conference registration fee to have a display table. Interested companies should contact Al Keene at IMI to ensure that proper arrangements are made for product displays and demonstrations.

1st RFID Conference

Wednesday, March 27, 2002

For Complete Outlines,
Visit IMI Web Site
<http://imi.maine.com>

12:00 Noon - 5:00 p.m.

Registration

2:00 p.m.

Opening Session – Technology & Market Evolution

WELCOME, INTRODUCTIONS & OPENING REMARKS

Alvin G. Keene, President, Information Management Institute, Inc.,
Kingfield, Maine

CONFERENCE CHAIRMAN: Charles E. Mara, Consultant, Concord,
Massachusetts

RADIO FREQUENCY ID: A GENERAL OVERVIEW

Charles E. Mara, Consultant, Concord, Massachusetts

MARKETS AND APPLICATIONS FOR RFID TECHNOLOGY AND SYSTEMS: A STRATEGIC OVERVIEW

David Krebs, Analyst, Venture Development Corporation, Natick,
Massachusetts

RFID: TECHNOLOGY FOR A "SMART FUTURE!"

Bill English, Vice President, Paper Division, Bielomatik Inc., New Hudson,
Michigan

ACTIVE RFID: WHERE DOES IT WORK AND WHY?

John Kingsmill, CEO, Identec Solutions, Kelowna, British Columbia, Canada

SUPPLIERS' FORUM

5-Minute Presentations Related To RFID Products Or Services – An
Opportunity For Conference Participants To Explain Their Products,
Services, Developments & Contributions To RFID Technology and its
Implementation

5:30 p.m.

Reception

Thursday, March 28, 2002

7:00 a.m.

Continental Breakfast

8:00 a.m.

Session 2 – RFID Applications & Technology

INK JET AS A TECHNOLOGY TO CREATE SMART ELECTRONIC AND RFID FEATURES

Dr. Alan Hudd, Managing Director, Xennia Technology, Royston,
Hertfordshire, England

RFID REQUIREMENTS FOR ACCESS CONTROL AND ANIMAL IDENTIFICATION

Lars Fredin, President, Metget Inc., Columbus, Ohio

THE C.TICKET: A NEW APPROACH TO SMART LABEL

Xavier Bon, Managing Director, ASK, Sophia Antipolis, France

RFID READER TECHNOLOGY AND ISSUES

Speaker to be Announced, Feig Electronic, Weilburg, Germany

RFID - THE REAL WORLD

L. Allen Bennett, ADC Technologies Group, High Point, North Carolina

1:00 p.m.

Lunch & Adjournment

IMI's UPCOMING PROGRAMS

13th Annual Thermal Printing Conference

April 29-May 1, 2002

1st Photographic Quality Digital Printing Conference

May 1-3, 2002

11th Annual Ink Jet Printing Conference

May 6-8, 2002

9th Annual Digital Printing Papers Conference

May 8-10, 2002

Chaparral Suites Hotel, Scottsdale, Arizona

The Ink Jet Academy

May 13-14, 2002

Ink Jet Printing Developers Conference 2002

May 15-17, 2002

Radisson SAS Hotel Amsterdam Airport

Amsterdam, The Netherlands

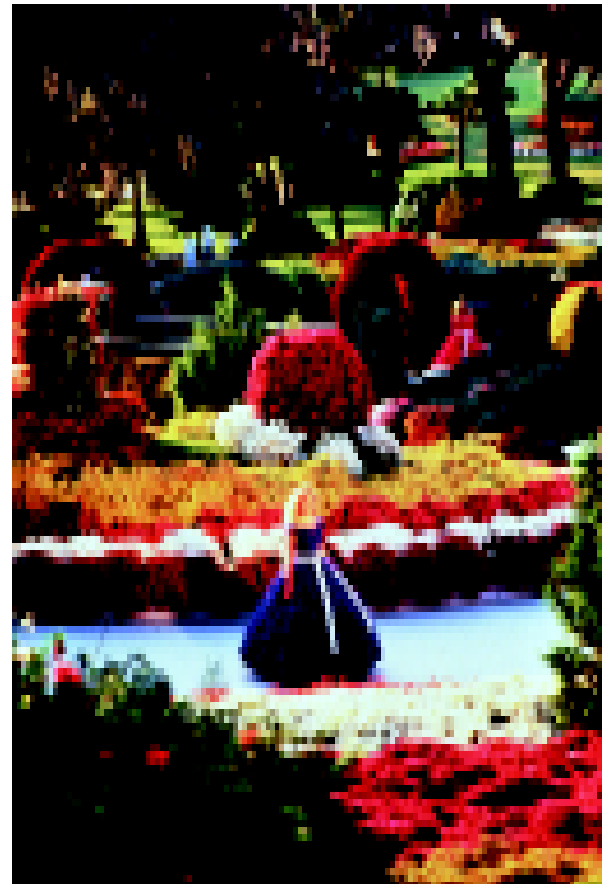
For Complete Information, see IMI's Web Site:

<http://imi.maine.com>

Email: imi@tdstelme.net

Call: +1-207-235-2225

Fax: +1-207-235-2226



REGISTRATION INFORMATION

Registration Fees:

12th Annual Tag, Ticket & Label Printing Conference

\$1095 per registrant
\$995 for each additional registrant from same company when registered as a group.

1st RFID Conference

\$795 per registrant
\$695 for each additional registrant from same company when registered as a group.

NOTE: A \$100 discount will be given to persons registering for both conferences

Cancellations will receive a 100% refund if made 72 hours prior to the start of the program. Substitutions may be made at any time. Cancellations made less than 72 hours prior to the start of the conference will be charged a \$300 cancellation fee, but will receive a copy of the complete conference binder.

To register for the **12th Annual Tag, Ticket & Label Printing Conference**, or **1st RFID Conference** submit the registration form with payment to Susan Rundlett, Conference Administrator, Information Management Institute, Inc., RR1 Box 2030, Kingfield, ME 04947 USA. You may reserve space by calling +1-207-235-2225, sending a fax to +1-207-235-2226 or by sending an email message to imi@tdstalme.net or visiting our web site <http://imi.maine.com>



The Sheraton Safari Hotel address is:

Sheraton Safari Hotel
12205 Apopka-Vineland Road
Orlando, FL 32836
Phone: +1-407-239-0444
Reservations Phone: +1-800-423-3297
Fax: +1-407-239-1778

REGISTRATION FORM

12th Annual Tag, Ticket & Label Printing Conference
March 25-27 2002

1st RFID Conference
March 27-28, 2002

NAME

TITLE

COMPANY

ADDRESS

CITY STATE ZIP

COUNTRY

PHONE FAX:

EMAIL

All checks should be in U.S. dollars drawn on a U.S. bank and made payable to Information Management Institute, Inc. An invoice with bank transfer details for IMI's U.S. or European bank account will be provided upon request.

SHERATON SAFARI HOTEL INFORMATION

The **12th Annual Tag, Ticket & Label Printing Conference** and **1st RFID Conference** is being held at the Sheraton Safari Hotel located in Orlando, Florida. Hotel reservations are the responsibility of each meeting registrant. To receive the special meeting rate of \$115 for single or double occupancy, you must identify yourself as a registrant to IMI's **12th Annual Tag, Ticket & Label Printing Conference** and **1st RFID Conference**. **Early booking is advised**. Phone +1-800-423-3297 to make hotel reservations.

LOCATION

The Sheraton Safari Hotel is conveniently located in the Lake Buena Vista area of Orlando, just 1/8 mile from the Walt Disney World® Resort, ten miles from downtown Orlando and 15 miles from Orlando International Airport. Commercial airport shuttle transportation is available from the arrivals area of Orlando International Airport.

Scheduled shuttle service is available from the Sheraton Safari Hotel to Magic Kingdom® Park, Disney-MGM Studios, Epcot®, Disney's Animal Kingdom Theme Park and Downtown Disney area. Recreational amenities at the Sheraton Safari Hotel include the courtyard swimming pool with its 79-foot water slide and 24-hour fitness center. The Sheraton Safari Hotel plus the Orlando area provide an excellent opportunity to extend your visit into a memorable vacation experience. Dress for the conferences will be casual.

Information Management Institute, Inc.
RR1 Box 2030
Kingfield, ME 04947
USA

**PRESORTED
FIRST-CLASS MAIL
U.S. POSTAGE
PAID
PORTLAND, ME
PERMIT # 6**